

# An Experimental Investigation on Effect of High Temperatures on Steel

**Bolishetti Chaitanya<sup>1\*</sup>, S Sunil Pratap Reddy<sup>2</sup>, Muchakurthi Karthik<sup>3</sup>**

<sup>1</sup>Department of Civil Engineering, Vaagdevi college of Engineering, Warangal, India

<sup>2</sup>Department of Civil Engineering, Vaagdevi college of Engineering, Warangal, India

<sup>3</sup>Department of Civil Engineering, Vaagdevi college of Engineering, Warangal, India

*\*Corresponding Author: chaitanya.bolishetti@gmail.com*

Available online at: [www.ijcseonline.org](http://www.ijcseonline.org)

Received: 10/Jul/2017, Revised: 26/Jul/2017, Accepted: 16/Aug/2017, Published: 30/Sep/2017

**Abstract:** The behaviour of RC beam and column members at elevated temperatures are being studied experimentally and analytically widely. However, hardly any attention is given towards analyzing the behaviour of structures with SFRC, e.g. SFRC beams, columns, portal frame etc. exposed to fire. Herein, is a paper research to study the impact of fire on steel reinforcement in reinforced concrete structures at elevated temperature that analyzed by means of a three dimensional (3D) nonlinear transient thermo-mechanical finite element (FE) analysis and validated with commercially software ANSYS and SAFIR.

**Keywords:-** High Temperature on Steel, Mechanical Loads, Safir, GFRP.

## 1.0. INTRODUCTION

Fire remains one of the serious potential risks to most buildings and structures. The extensive use of concrete as a structural material has led to the need to fully understand the effect of fire on reinforced concrete structures. Fire has been a source of comfort and catastrophe to the human race since ancient history. Fire is a destructive force causing thousands of deaths and loss of property worth billions of dollars. Fire disasters can occur below the ground, on the ground or above the ground. Sometimes, they occur in the most unexpected or unpredictable circumstances. Considerable progress has been made in the understanding of structural fire protection since the earliest attempts to implement fire safety. Fire protection activity was initiated after a great fire in London in 1666; however investigation of structural fire protection began in second half of 18th century. Further the advances in material technology led to the concept of fire proof structures using gypsum. Later, Metropolitan Borough Act (1844) and London Building Act (1894) brought refinement in building control regulations. A scientific approach to research into structural fire resistance began towards the end of 19th century after the establishment of British Fire Protection Committee (BFPC). In 1932 first British Standard (BS 476:1932) related to fire was published which defined the test for fire resistance. The recent collapse of the twin-

towers, World Trade Centre building in New York, USA, due to the terrorist attack and subsequent fire has renewed the interest in fire-resistant design of structures. Traditionally, the provision of fire resistance for reinforced concrete (RC) structures and components is usually treated indirectly in

structural design. Most design procedures assume sufficient fire resistance, if certain criteria, mainly the distance of the reinforcing bars from the concrete surface, are kept. Building codes specify regulations for buildings designed in such a way that they exhibit an acceptable level of performance in the event of fire. These regulations are concerned with the prevention of premature collapse, the provision to evacuate the occupants from the structure on fire, avoiding spread of the fire to adjacent properties etc. However, when the means for containing a fire fail, such as a Fire Suppression System, Structural Integrity is the last line of defense. Hence, it is necessary to consider the risk of fire in designing of structures. Generally concrete is thought to have good fire resistance but the behavior of reinforced concrete columns under high temperature is mainly affected by the strength of the concrete, the changes of material property and explosive spalling. However, high temperatures affect the strength of the concrete by explosive spalling and so affect the integrity of the concrete structure. In recent years, many researchers studied the fire behavior of concrete columns; their studies included experimental and an analytical evaluation for reinforced concrete. Concrete is a material that has an excellent intrinsic behavior when exposed to fire, it does not burn, (non-combustible), and it has a high thermal massivity, which significantly slows down the spread of heat through concrete elements. As a matter of fact, in most common fires only the outer layer of the concrete with a thickness of approximately 3 to 5 cm is damaged (Denoël, 2007). Therefore, many concrete buildings that experienced fire can be fairly simply restored and reused. An excellent example of the good behavior towards fire of concrete structures is the Windsor Tower in Madrid (Denoël, 2007). The fire occurred

on 14 February 2005, during which the building was fortunately unoccupied. Despite that the fire spread over numerous floors and lasted for 26 hours, the building remained standing, as can be seen in Figure 1.1, only the part that collapsed were the steel perimeter columns above the 20th floor, which supported the floors



Figure 1.1: The Windsor Tower in Madrid after a 26 hour fire in 2005.

## 2.0. FE ANALYSIS PROCEDURE FOR THERMAL AND MECHANICAL LOADS

The need for incorporating the fire loading into structural design has long been recognized, and is becoming a greater concern because of security-related issues. Reinforced concrete structures are also commonly exposed to thermal loads as the result of the design function of the structure, ambient conditions, heat of hydration,[3] or exposure to fire. Therefore, there has been a growing interest in research on the advanced analysis and design of reinforced concrete structures subjected to thermal loads. Currently, transient thermal analyses are typically not employed in the design of reinforced concrete structures for thermal (fire) conditions. Rather, code provisions are typically based on detailing and cover requirements, [3][4], which is based on the empirical data and provide an acceptable fire-rating in terms of the length of time that the structure must sustain its mechanical loads in the presence of fire without collapsing (e.g. three hours).

### 2.1. ANALYSIS PROCEDURE

To understand the response of structures to thermal loads, various stages of analyses must be considered separately. The general procedure for transient thermal-stress analysis of a RC structure in ANSYS R15.0 consists of:[2]

- i. Building a two-dimensional or three-dimensional model of the structure. The model incorporates the geometry (concrete and steel bars as reinforcement), appropriate material properties, and boundary conditions.

- ii. Applying the thermal loads to the desired surface of the structure resulting from the furnace transient fire (in the form of transient temperatures versus time curves) using 24
- iii. “Standard Time-Temperature” curve applied according to the ISO 834 or ASTM-E119 (shown in Figure 4.8). The remaining surfaces of the structure are considered exposed to ambient temperature.

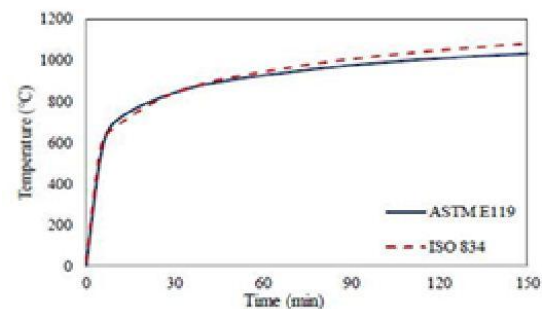


Fig no: 2.1 Standard curve

- iv. Applying a mechanical load on suitable surface (uniformly distributed load on top face for beam and axial load for column) to simulate the dead and live gravity service loads during fire exposure. Also, apply the thermal loads in the form of nodal temperature at several time points obtained in step 2,[1] on the structural finite element model and compute the deflection and strains in the structure.
- v. Evaluate the total deflection as well as the thermal, mechanical, and total strain for different points within the mid-span beam cross section and at the beam column joint during the time of exposure to the fire from the structural finite element model. The deformation field in the model at the first load step (due to the applied gravity load) is used to verify the correct behaviour of the model and correct modeling of boundary and loading conditions.[1]

## 3.0. VALIDATION PROBLEMS

### 3.1. AIM AND OBJECTIVES

The main aim of the present study is to provide a better understanding of the impact of fire on steel reinforcement in reinforced concrete [3] structures this was achieved by carrying out the investigations with following objectives:

- Modelling a cross section and analysing the effect of fire on the cross section.

- Using SAFIR & ANSYS software to analyses the impact of fire on the steel reinforcement.
- Validating it with the experimental data available in the literature.

A number of FE models are available in literature studying the behaviour of RC structural elements such as beams and columns under [3] mechanical loading with or without fire. Therefore, as a part of validation process a problem was carried out by:

### 3.2. TRANSIENT HEAT TRANSFER ANALYSIS

A two dimension transient analysis was carried out of unprotected steel under elevated temperature.

#### 3.2.1. PROBLEM SPECIFICATION

The experimental results used for validating the model in SAFIR are based on the investigation carried out by Newman (1990). Using this numerical example given below as done in the [2] design of steel structures book that to calculate the temperature rise for an ISMB 400 heated on four sides after 15min to ISO 834 fire.

### 4.0. MODELLING AND RESULTS DISCUSSION USING SAFIR SOFTWARE

From IS808 for ISMB400 the dimensions are as given below, Area=78.46cm<sup>2</sup>, where D=400mm, B=140mm, t=8.9mm.

**STEP 1:**The first step is to calculate the heating parameter as given by the formula for unprotected steel member heated in for sides as  $H_p = 2D + 4B - 2t$ ,

$$\text{Therefore } H_p = 2D + 4B - 2t = 2 \times 400 + 4 \times 140 - 2 \times 8.9 = 1342.2 \text{ mm}, H_p = 1.342 \text{ m}$$

**STEP 2:**After obtaining the heating parameter, we can get the section factor as the ratio between the heating parameter to the cross section area,

$$H_p/A = 1.342 \times 100^2 / 78.46 = 171 \text{ m}^{-1}$$

#### STEP 3:

To obtained

$$\Delta t = \frac{25,000}{H_p/A} = \frac{25000}{171} = 146 \text{ mm}$$

$$\Delta t = 120 \text{ s.}$$

The values of  $T_s$  are calculated at  $t=0, 2, 4, 6, 8, \dots$  minutes and the values of  $T_o$ ,  $h_{\text{net}}$ ,  $(T_t - T_s)$  and  $s$  at  $t=1, 3, 5, 7, \dots$  min. the calculations are carried out in the spread sheet form as shown in table 3.1 below.

Taking the mean of values 14 and 16min, the steel has reached a temperature of 671.5°C after 15 min.

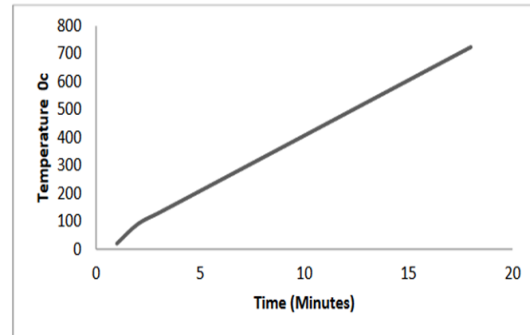


Figure 4.1: Newman (1990) Temperature-time curve for steel reinforcement (ISMB400).

Fig no: 3.0

### 4.1 MODELING USING SAFIR

Similarly this calculation was done using SAFIR software in order to calculate the amount of temperature exacted on the steel[5] reinforcement as done by Newman (1990) structures. The steps are as follows:

#### STEPS OF CALCULATING TEMPERATURE USING SAFIR

**SOFTWARE First Step:** Using WIZARD2007 to obtain the input file for SAFIR.

i. Click on from desktop wizard2007

ii. A dialogue box opened select user, input the height of section as (D) 400, input , input thickness of the web as 8.9mm also input the Root[3] fillet if any and click on concrete slab if you want to add concrete slab to your problem. And click on next -

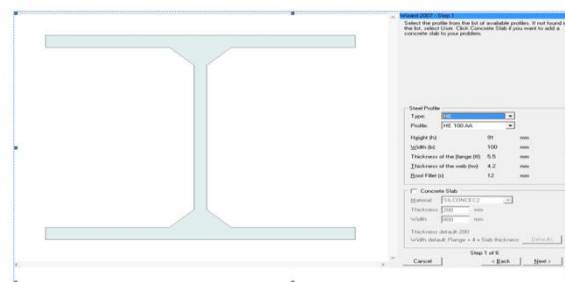


Figure 4.2: Wizard 2007 input data dialog box.

Fig no: 4.1.1

iii. Select the protection material and the protection thickness. If any, but in this case protection layer select (None) and click on next -

iv. Select the number of elements to describe the steel profile, that is the meshing and click on next -

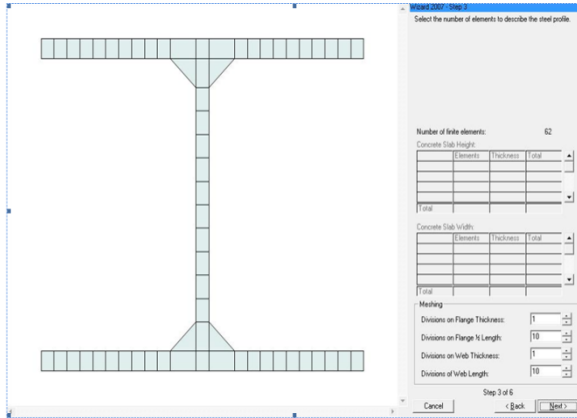


Figure 4.3 mesh configuration.

Fig no: 4.1.2

v. Select the fire curve as FISO and the rotation angle if any, and so also the exposed faces of the steel profile, Face1, face2, face3, fac4 and press on next –

vi. Select the number of integration points on elements and global coordinates of the node line and the centre of torsion. Precision as -4, number of integration points as 3, time step as 12sec, end time 2400, time print 60sec, and press on next

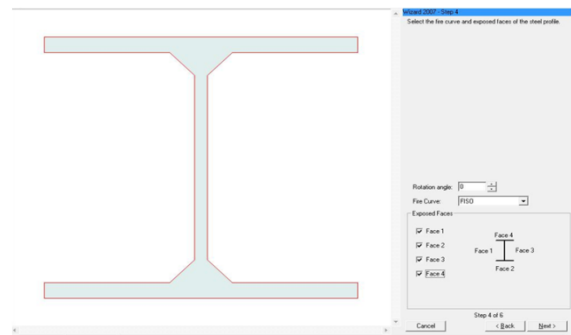


Figure 4.4: Wizard 2007 faces in contact with fire dialog box

Fig no: 4.1.3

vii. The wizard has finished collecting the information needed for the SAFIR input file, and press Finish to save values in the data file as **abba**.

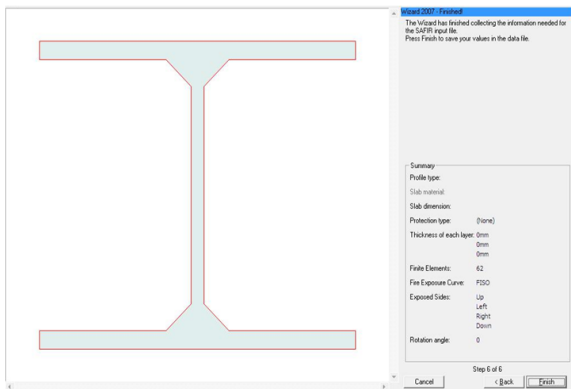


Figure 4.5: Wizard 2007 input data final dialog box.

Second Step: Using SAFIR software to run the inputted data from WIZARD2007 software

Fig no: 4.1.4

- i. Go to C: / click on SAFIR.
- ii. A dialogue box opened input the file name as **abba** and click enter to run the data for the out file to be used in DIAMOND software.

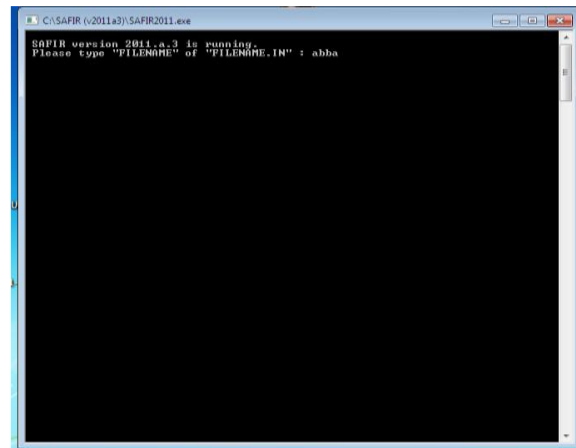


Figure 4.6: SAFIR processing data dialog box.

Fig no: 4.1.5

**Third Step: Using DIAMOND software obtain the temperatures as well as the charts**

Click on DIAMOND 2011 from the desktop

Click on file menu and select open from there select the output file created from SAFIR as abba.

The file will opened from there click on result and select temperature, the result for temperature will be displayed, also by clicking on result by selecting chart the chart is going to be plotted

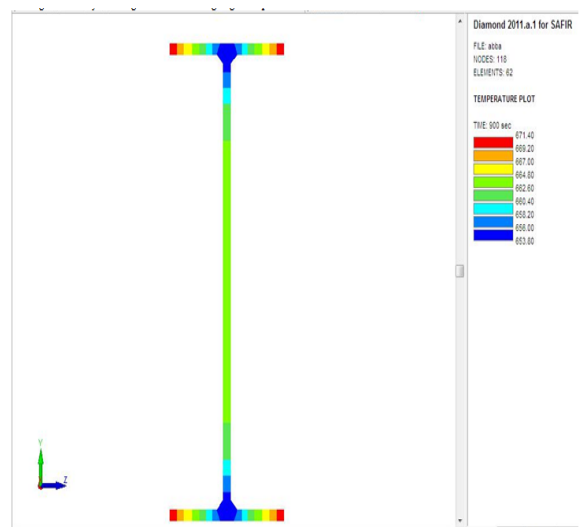


Figure 4.1.6 Diamond output chat file

The image above shows the screen snap from the DIAMOND environment, representing the temperatures at the time of 900sec (15minutes). Similarly the chart for that is as shown below.

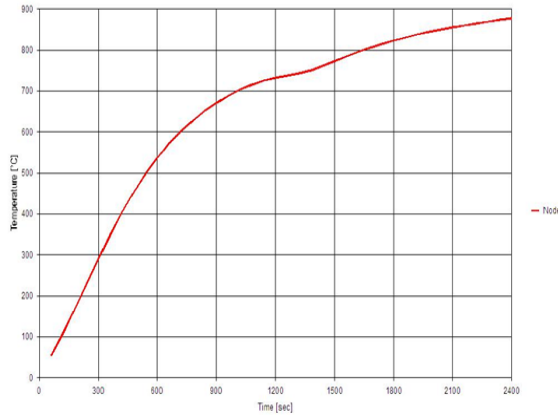


Figure 4.8: Temperature-time curve for steel reinforcement Model (SAFIR v2011a3)

Fig no: 4.1.7

It can be seen that the value of temperature obtained as the time of 15min (900sec) from Fig.4.1 the manual calculation (Newman 1990) the steel has reached a temperature of 671.5°C after 15 min. while from Fig. 4.8 the DIAMOND Output file the steel reached 671.4°C at 900sec (15min). Almost about 0.5°C is the difference between the two. Thus, it is clear to say that the predicted and experimental values are in good agreement with each other.

## 4.2 HEAT TRANSFER ANALYSIS

Three Dimensional (3D) Transient heat transfer analysis of a concrete beam reinforced with glass fiber reinforced polymer (GFRP) rebar is carried out.

**4.2.1 PROBLEM SPECIFICATION** Here, a 3D heat transfer analysis on RC beam reinforced with GFRP rebars is carried out using ANSYS 15.0. The experimental results used for validating the model in ANSYS are based on the investigation carried out by Pratik (2013). A FE model for the same [5] was also developed by Abbasi and Hogg, (2006). The beam is subjected to fire, at its bottom and on the sides, simulated by using standard fire curve as per ISO 834. The beam is 4400 mm long with cross section dimensions of 350 by 400 mm reinforced with 12.7 mm diameter 7 GFRP rebars in two layers at the bottom and 2 at the top; surrounded by 9 mm stirrups at 160 mm center to center arranged as shown in Figure 4.9. The cover to the reinforcement is 75 mm at the bottom and 50 mm on the sides and at [5] the top. The thermal properties of the material useful for the analysis are provided in Table 4.2 below. The strength of concrete used is 42 MPa i.e. a normal strength concrete.

Table 4.2: Thermal Properties of the Materials for Validation Problem

Material	Thermal conductivity (k) W/m.K	Density ( $\rho$ ) kg/m <sup>3</sup>	Specific heat (C) J/kg.K
Concrete	$2.7 \times 10^{-2}$	$2.32 \times 10^4$	722.8
Rebars	$4.0 \times 10^{-2}$	$1.60 \times 10^4$	1310

Fig no: 4.2

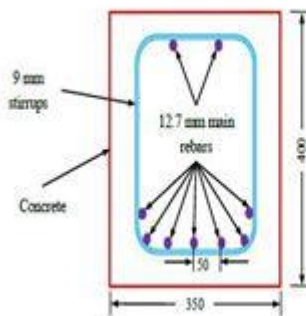


Fig no: 4.2.1

## 5.0. MODELLING, RESULTS AND DISCUSSION

The 3D beam Reinforced concrete was modelled using ANSYS 15.0 software. The concrete beam was modelled using SOLID 65 element, for heat transfer analyses. It has single degree of freedom at nodes i.e. temperature. The GFRP bars are modelled using LINK180 element. This element also has single degree of freedom, temperature, at each node. As no mechanical load is applied, no mechanical boundary conditions are applied to the model. Full bonding is assumed between the rebars and the concrete and this was achieved in the software. The entire beam model was subjected to an ambient room temperature of 20°C in the form of predefined initial condition. Then, the beam is subjected to fire in the form of standard time temperature curve as per ISO 834 at the vertical faces and the soffit of the beam. For this, temperature boundary condition is specified at the sides and soffit of the beam and varying with amplitude of standard time temperature curve during the transient heat transfer. The temperature variations at different time intervals obtained in this analysis using ANSYS at the centre and side of the beam



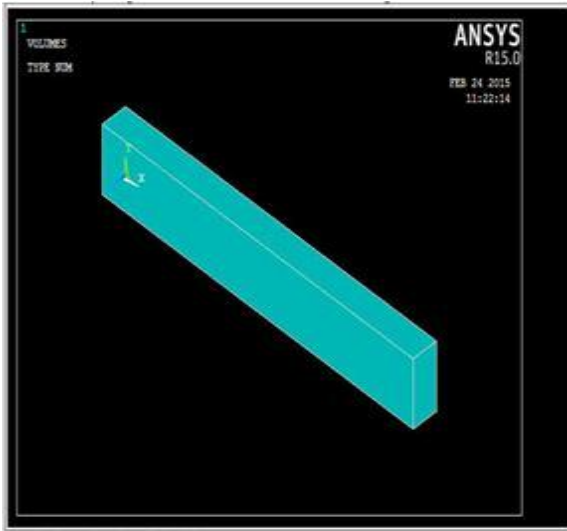


Fig no: 5.0



Fig no: 5.3

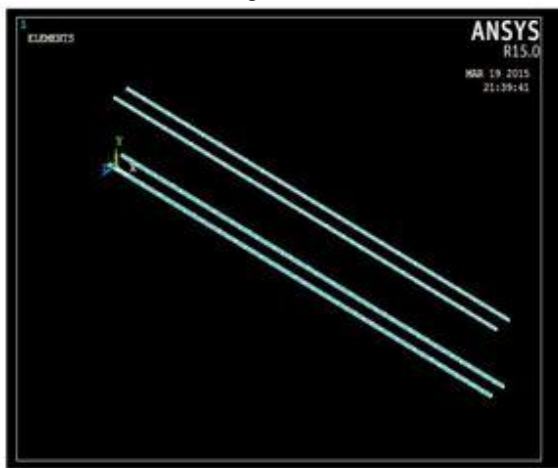


Fig no: 5.1

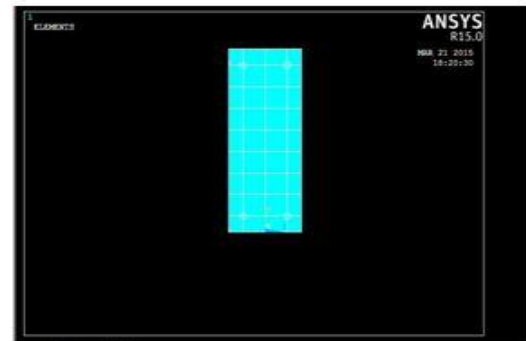


Fig no: 5.4

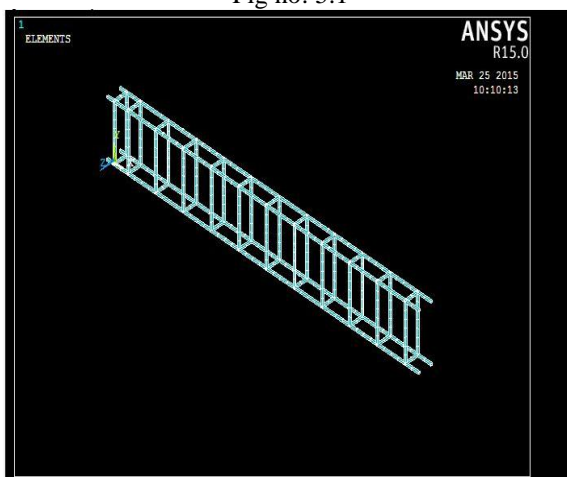


Figure 5.2 : GFRP and stirrups layer FEM model

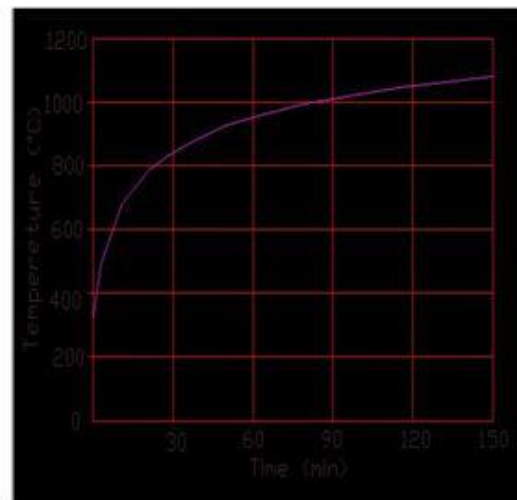


Fig no: 5.5

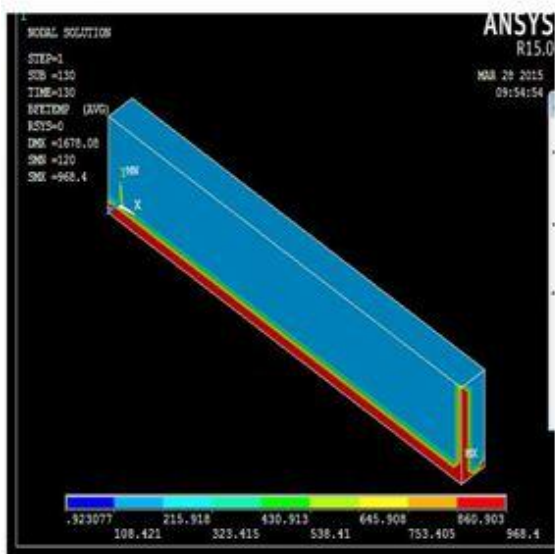


Fig no: 5.6

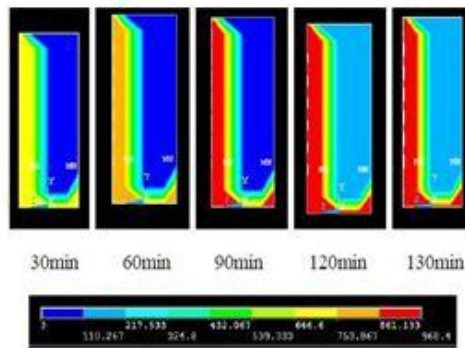


Fig no: 5.7

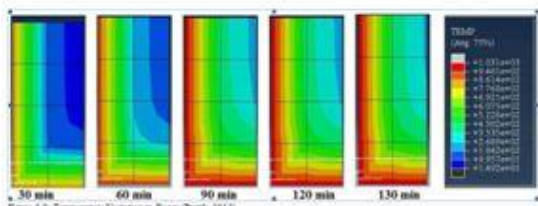


Fig no: 5.8

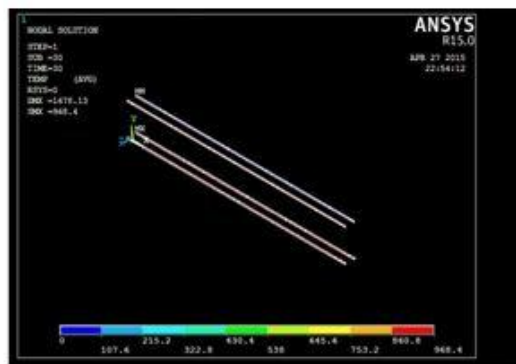


Fig no: 5.9

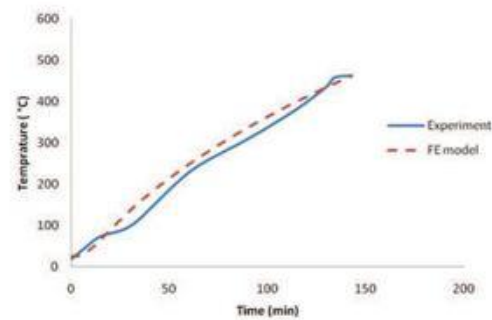


Fig no: 5.10

The time at which the temperature in GFRP bars reached  $430^{\circ}\text{C}$  which was considered as the beginning of failure of GFRP bars was around 90 minutes for the ANSYS model as shown in Figure 5.11 above, which is 3 minutes less than that of experimental value. It is clear that the predicted and experimental values are in good agreement with each other. Although the FE model overestimates the result as compared to the experimental data, this may be attributed to the lack of temperature dependent material properties of GFRP rebars. Thus the developed FE model can be used as a valid numerical tool to predict the temperature distribution in concrete beams.

## 6.0. CONCLUSION

A nonlinear 3D FE model was developed in this study and validated against the experimental program conducted by Abbasi and Hogg (Abbasi & Hogg, 2006) as can be seen in the previous sections. Good agreement between the measured experimental and predicted FE simulation was obtained for the average temperature in the GFRP bars at all stages of fire exposure. Although the UK Building Regulations (Building Regulations, 2000) for fire safety recommends the minimum periods of the fire resistance for the most structural elements to be of 90 min, the fire tests and FE simulation results showed that concrete beams reinforced with GFRP bars can achieve a fire endurance of about 130 minutes. Thus, using GFRP bars as concrete reinforcement seems to meet the fire design requirements. Upon the validation of the measured data, the FE modeling could provide full field of results, in terms of 3D temperature distribution.

It could be concluded that the developed FE model is a great tool to aid designers and researchers to predict numerically the temperature distribution of RC beams reinforced with GFRP bars. Thus, the validated model could be used as a valid tool in lieu of experimental testing especially in design oriented parametric studies.

## REFERENCES

- [1]. Ali, F., Najdai, A., and Choi, S. (2010). "Numerical and Experimental Investigation of the Behavior of High Strength

- Concrete Columns in Fire.” *Engineering Structures*, 32(5), 1236-1243.
- [2]. Altun, F., Haktanir, T., and Ari, K. (2007). “Effects of Steel Fiber Addition on Mechanical Properties of Concrete and RC Beams.” *Construction and Building Materials*, 21(3), 654-661.
- [3]. Ario, O. (2007). “Effects of Elevated Temperatures on Properties of Concrete.” *Fire Safety Journal*, 42(8), 516-522.
- [4]. Balaguru, N., and Shah, S. P. (1992). “*Fiber Reinforced Cement Composites*.” McGraw-Hill, New York
- [5]. Behbahani, H. P., Nematollahi, B., Sam, A. R. M., and Lai, F. C. (2012). “Flexural Behavior of Steel-Fiber-Added-RC (SFARC) Beams With C30 and C50 Classes of Concrete.” *International Journal of Sustainable Construction Engineering & Technology*, 3(1), 54-64.